

The Specificity of Social and Human sciences and its impact on Research Evaluation

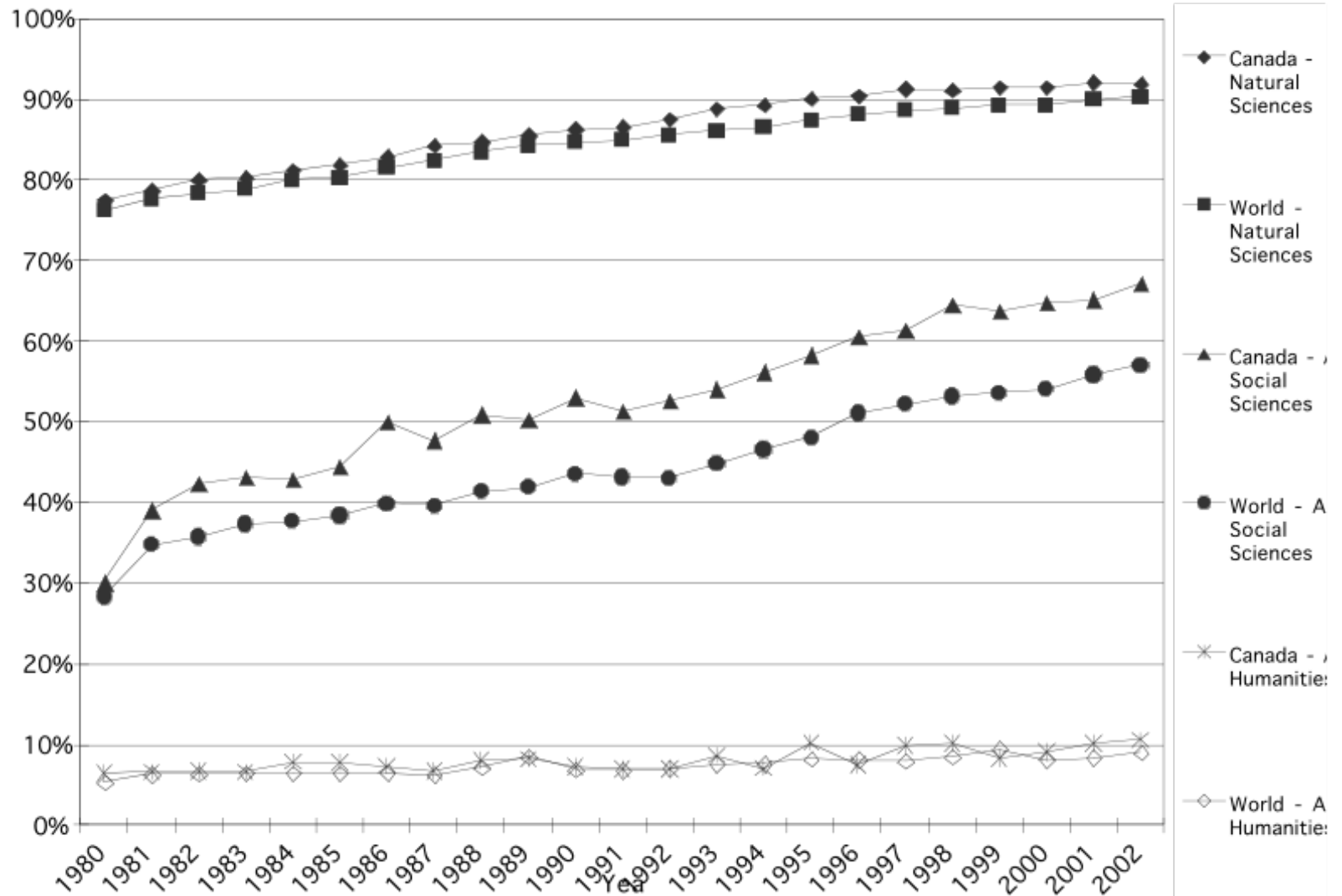
Yves Gingras

Chaire de recherche du Canada en
Histoire et sociologie des sciences
Université du Québec à Montréal

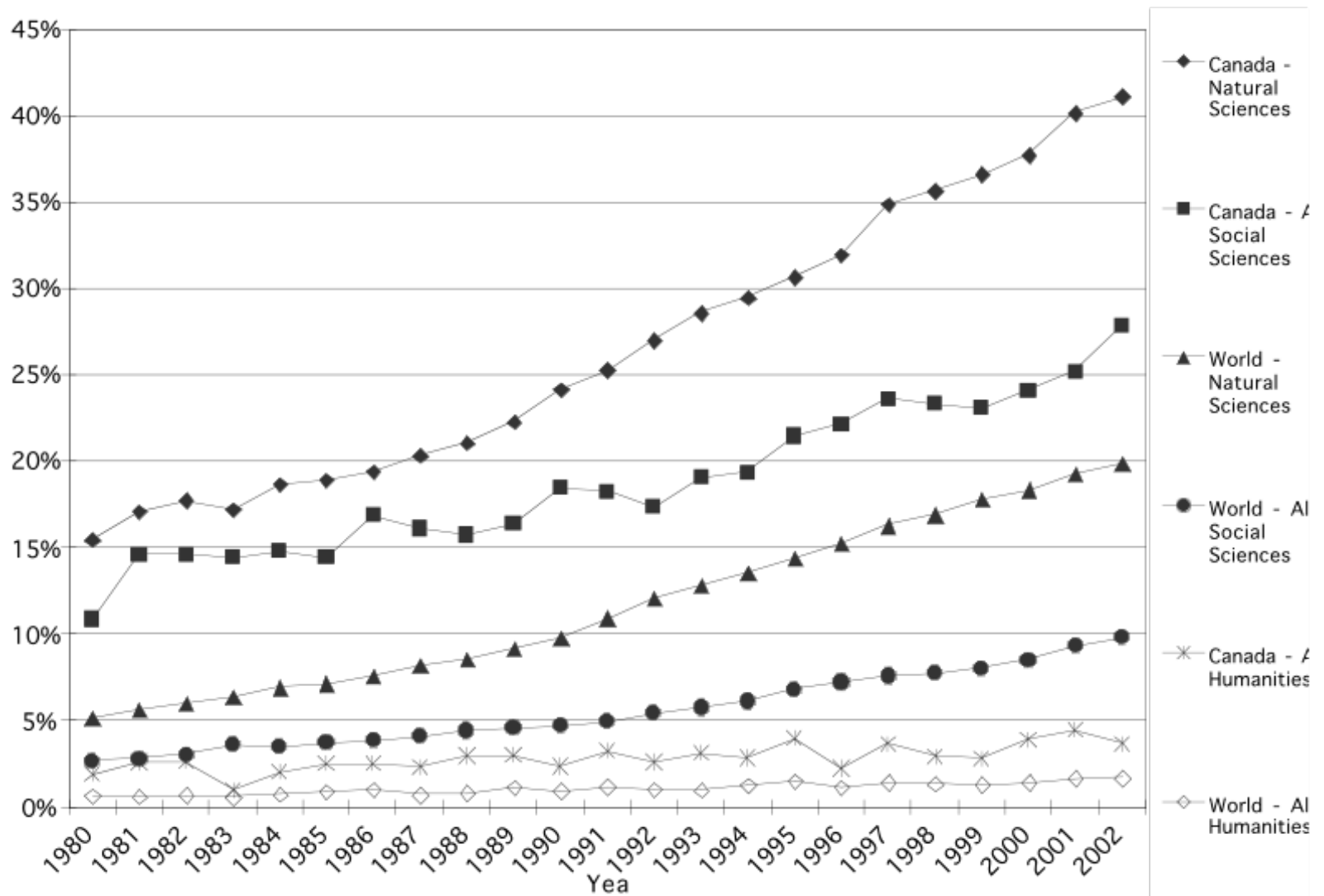
Introduction

- The natural sciences are different from the social and human sciences
- The social sciences are different from the humanities

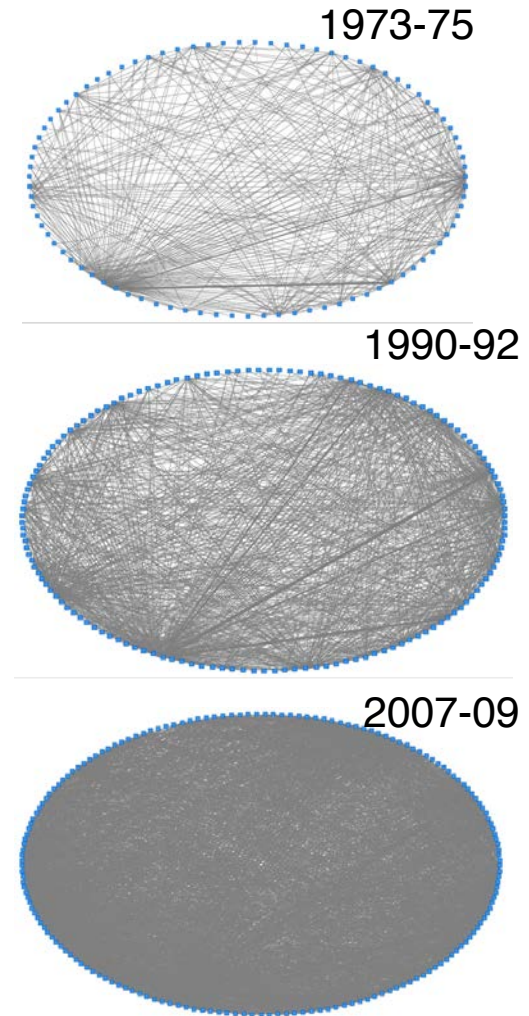
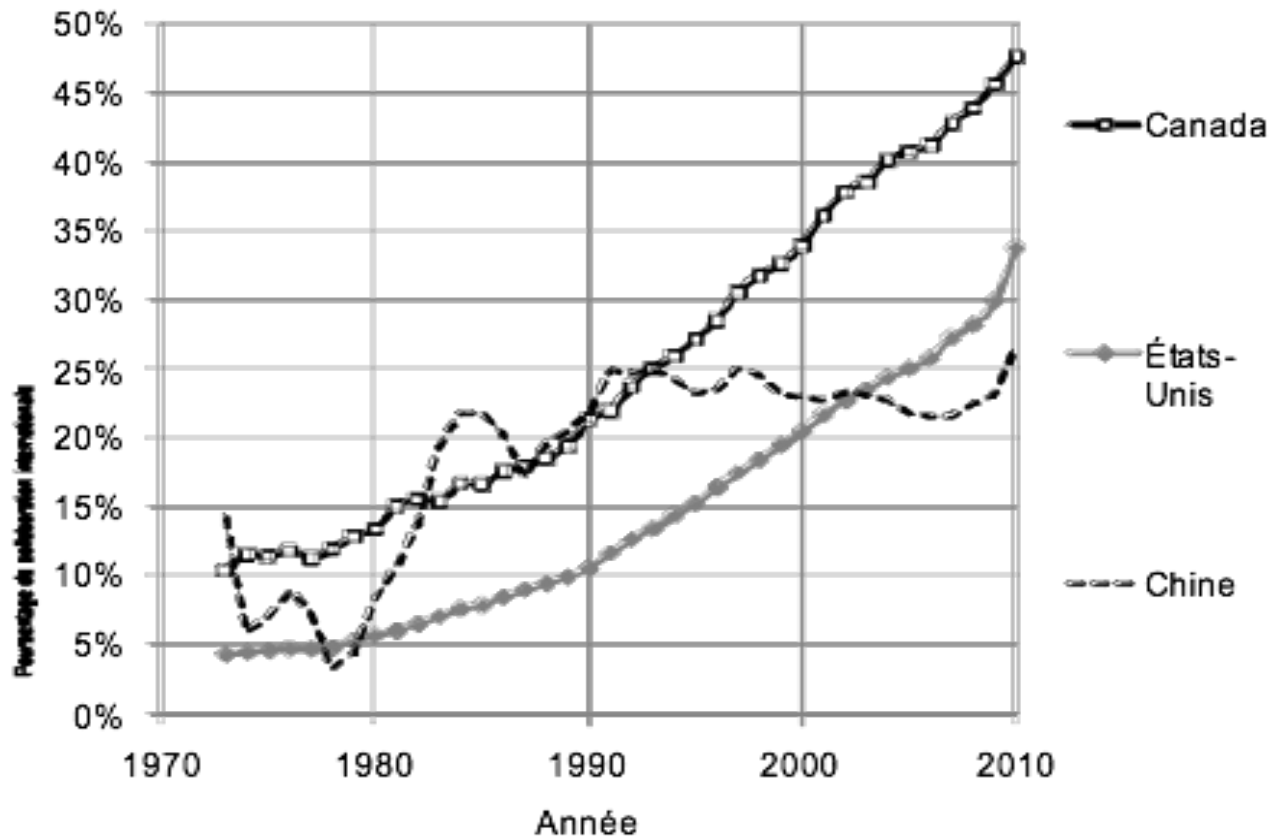
% of papers with more than one author for different disciplines (Canada, world), 1980-2002



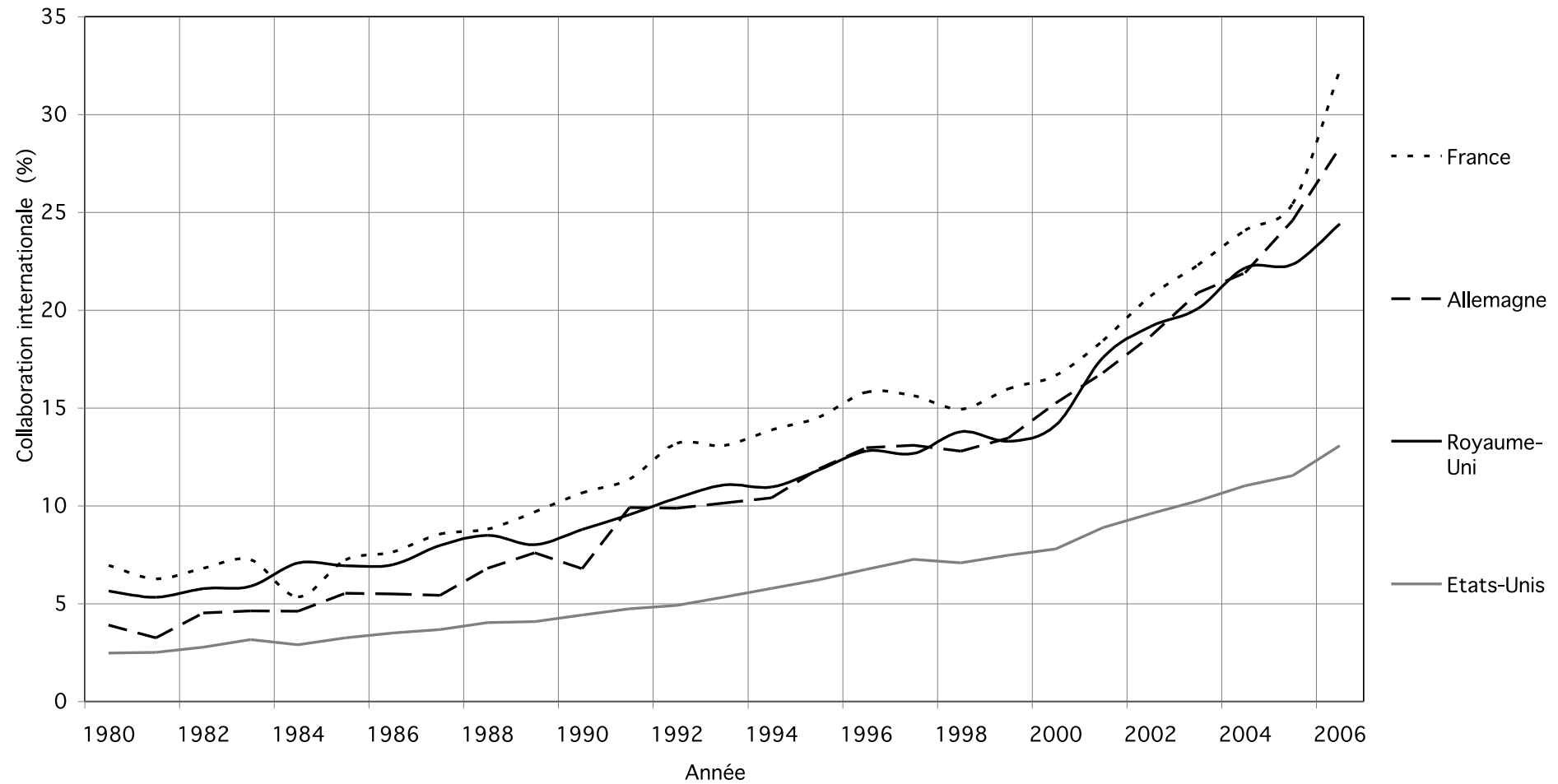
Level of International collaboration for different disciplines (Canada, world), 1980-2002



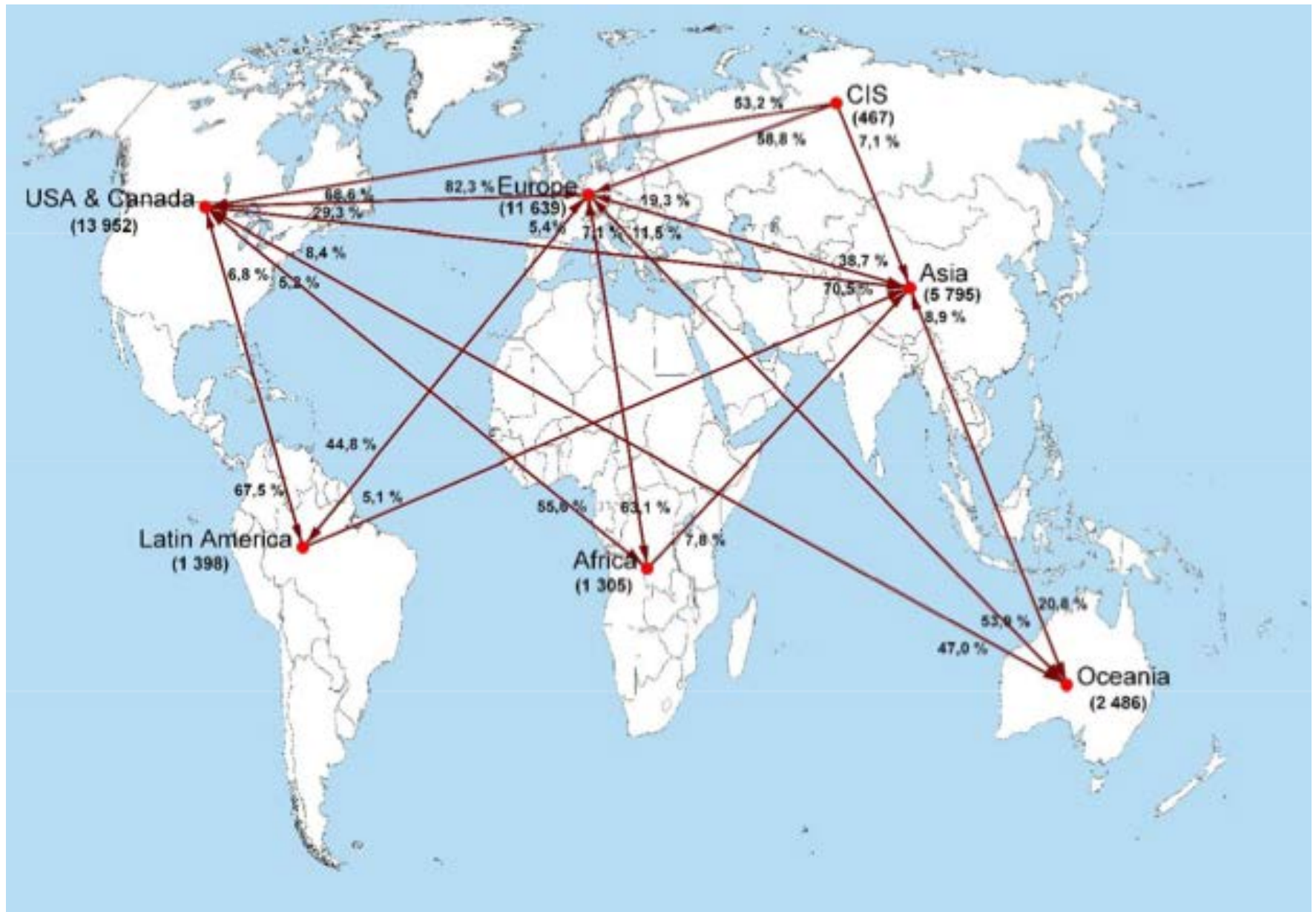
Growth of international collaboration : diversification and multilateral relations



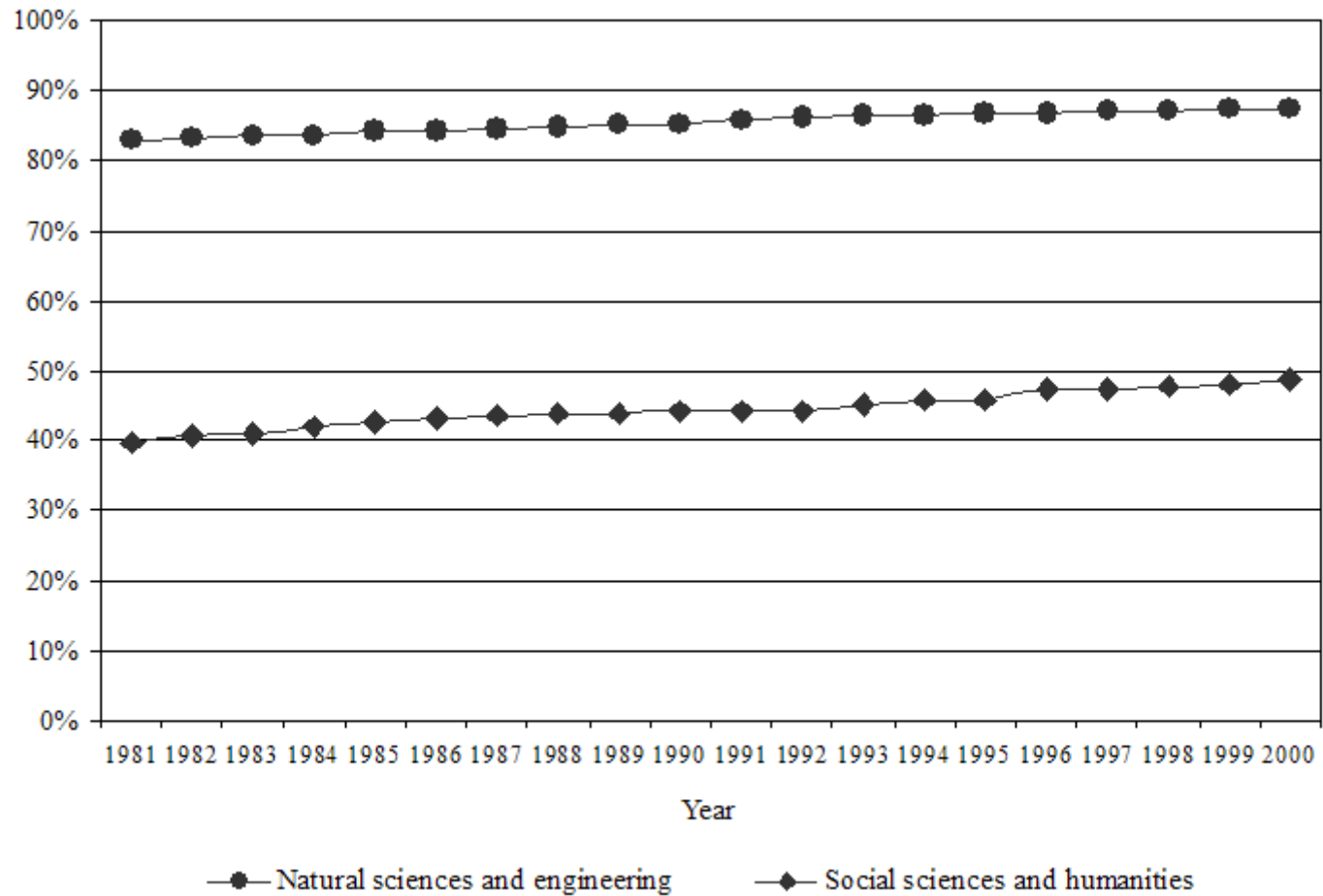
Evolution of internationale collaboration in SSH for different countries



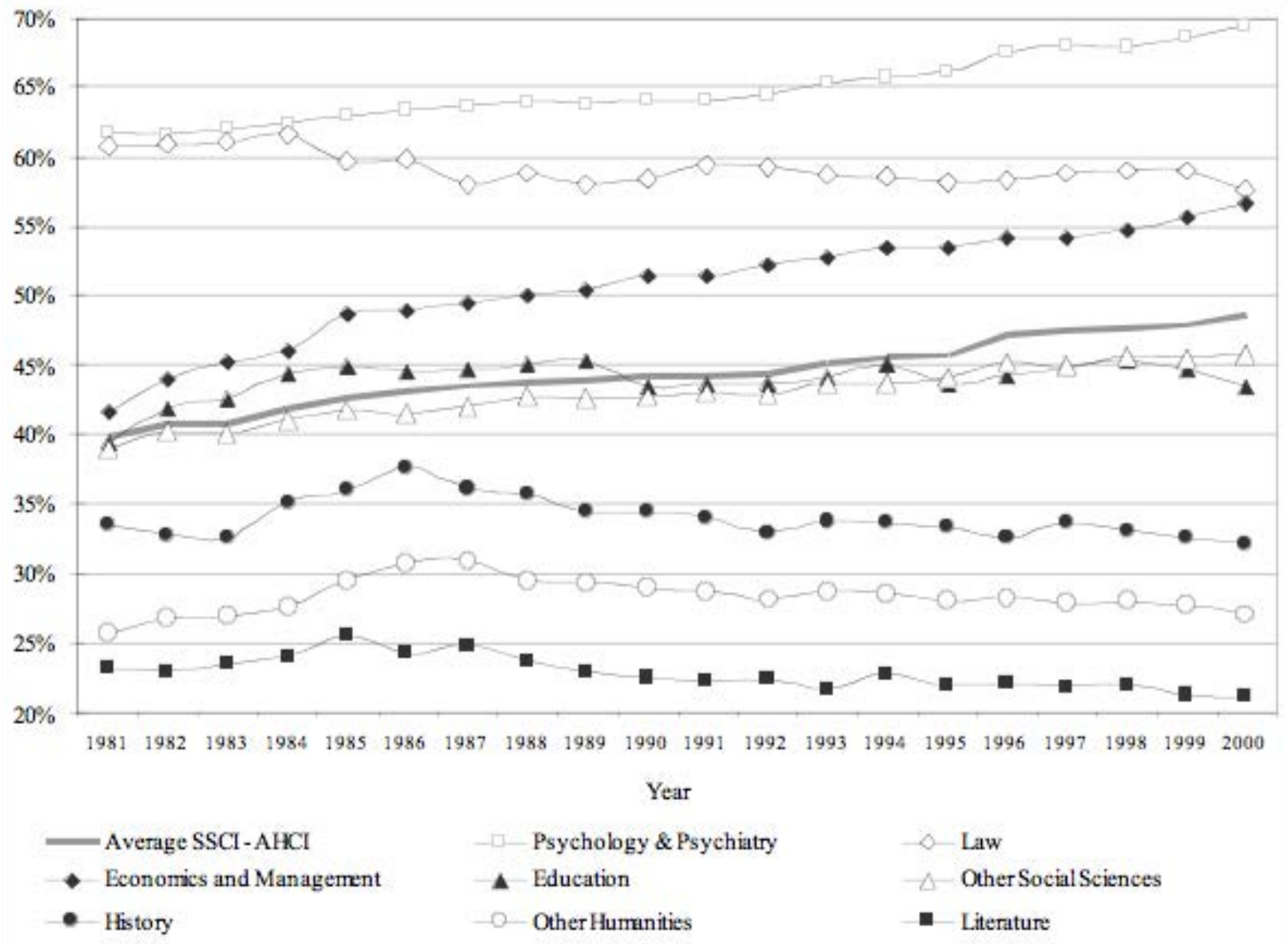
Distribution des collaborations internationales en sciences sociales (1998-2007)



Proportion of references to journals for NSE and SSH, 1980-2000 (Lariviere et al. 2006)



% of references to articles in different SS and H disciplines



National Traditions

- The tendency to cite papers instead of books varies according to disciplines and also according national traditions:
- Between 2000 and 2008:
 - 47,1% of references by American sociologists are to articles against only 31,2% for their French colleagues and 34.5% for German sociologists.

Correlation between research themes and regions (1980-1990 and 1990-2000)

80-90	Africa	Asia	CIS	Europe	Latin_Am.	North_Am.	Oceania
Africa	1	0,184	0,017	0,121	0,243	0,183	0,072
Asia	0,184	1	0,007	0,370	0,099	0,277	0,320
CIS	0,017	0,007	1	0,055	-0,024	0,083	-0,021
Europe	0,121	0,370	0,055	1	0,205	0,575	0,366
Latin_America	0,243	0,099	-0,024	0,205	1	0,172	0,011
North_America	0,183	0,277	0,083	0,575	0,172	1	0,412
Oceania	0,072	0,320	-0,021	0,366	0,011	0,412	1

90-2000	Africa	Asia	CIS	Europe	Latin_Am.	North_Am.	Oceania
Africa	1	0,361	-0,049	0,166	0,058	0,153	0,098
Asia	0,361	1	-0,015	0,431	0,228	0,308	0,203
CIS	-0,049	-0,015	1	0,043	-0,163	0,030	0,005
Europe	0,166	0,431	0,043	1	0,163	0,451	0,402
Latin_America	0,058	0,228	-0,163	0,163	1	0,036	-0,034
North_America	0,153	0,308	0,030	0,451	0,036	1	0,440
Oceania	0,098	0,203	0,005	0,402	-0,034	0,440	1

Geographic Origin of references

Citing Region	North America			Europe			Asia			Oceania		
	1983-85	1993-95	2003-05	1983-85	1993-95	2003-05	1983-85	1993-95	2003-05	1983-85	1993-95	2003-05
Africa	0%	0%	0%	0%	0%	0%	0%	0%	0%	0%	0%	0%
Asia	0%	0%	0%	0,4%	0,4%	0,2%	9,7%	5,4%	1,3%	1,2%	0%	0,3%
CIS	0%	0%	0%	0,2%	0%	0%	0%	0%	0%	0%	0%	0%
Europe	15,8%	18,3%	21,9%	54,4%	52,1%	50,0%	24,7%	32,4%	41,0%	34,1%	37,1%	42,8%
International	1,4%	1,5%	1,4%	1,2%	1,6%	1,3%	3,0%	3,5%	2,2%	1,7%	2,1%	1,7%
Latin America	0%	0%	0%	0%	0%	0%	0,3%	0%	0%	0%	0%	0%
North America	82,9%	80,2%	76,7%	43,1%	45,3%	48,1%	61,9%	58,7%	55,5%	47,7%	47,9%	47,8%
Oceania	0%	0%	0%	0,8%	0,5%	0,4%	0,5%	0%	0%	15,4%	12,8%	7,4%

Citing Region	Latin America			Africa			CIS		
	1983-85	1993-95	2003-05	1983-85	1993-95	2003-05	1983-85	1993-95	2003-05
Africa	0%	0%	0,7%	20,9%	19,4%	11,3%	0%	0,2%	0,2%
Asia	0%	0,6%	0,3%	0,7%	0,9%	0,9%	0%	1,2%	1,2%
CIS	0,5%	0%	0%	0%	0%	0%	55,3%	38,2%	16,8%
Europe	24,5%	30,5%	34,4%	44,1%	46,7%	53,1%	28,3%	27,6%	31,2%
International	4,2%	3,7%	2,3%	1,8%	5,0%	3,2%	0,6%	0,5%	0,2%
Latin America	23,1%	13,3%	5,9%	0%	0%	0%	0%	0%	0%
North America	47,7%	51,7%	56,4%	31,7%	27,6%	31,4%	15,8%	32,3%	50,4%
Oceania	0%	0,2%	0%	0,9%	0,5%	0,2%	0%	0%	0%

Limits of bibliometric evaluation inSSH

- Existing databases (WoS and Scopus) are not representative of national traditions outside the anglo-saxon world
- Fashionable indicators like the « Impact factor » and the « h-index » are not valid indicators.

Perverse effects of bibliometric evaluation

- Pressure to publish in so-called « international » journals
- Devalue books and books chapters
- Decline of interest for local objects
- Decline of national journals in SSH

Conclusions

- Publication practices greatly vary according to disciplines (SS, H, SNG)
- Valid indicators must take these differences into account
- The mechanical (and unreflexive) use of « h index », « impact factors » and similar measures is dangerous for the future diversity of research in all SSH disciplines.

Thank You!