

European Social Survey

**MEASURING THE  
IMPACT OF THE  
EUROPEAN SOCIAL  
SURVEY**

**‘Stay Tuned to the  
Future Conference’**

**Bologna  
25 January 2018**

Professor Rory Fitzgerald  
Director, ESS ERIC  
ESS HQ, City, University of London

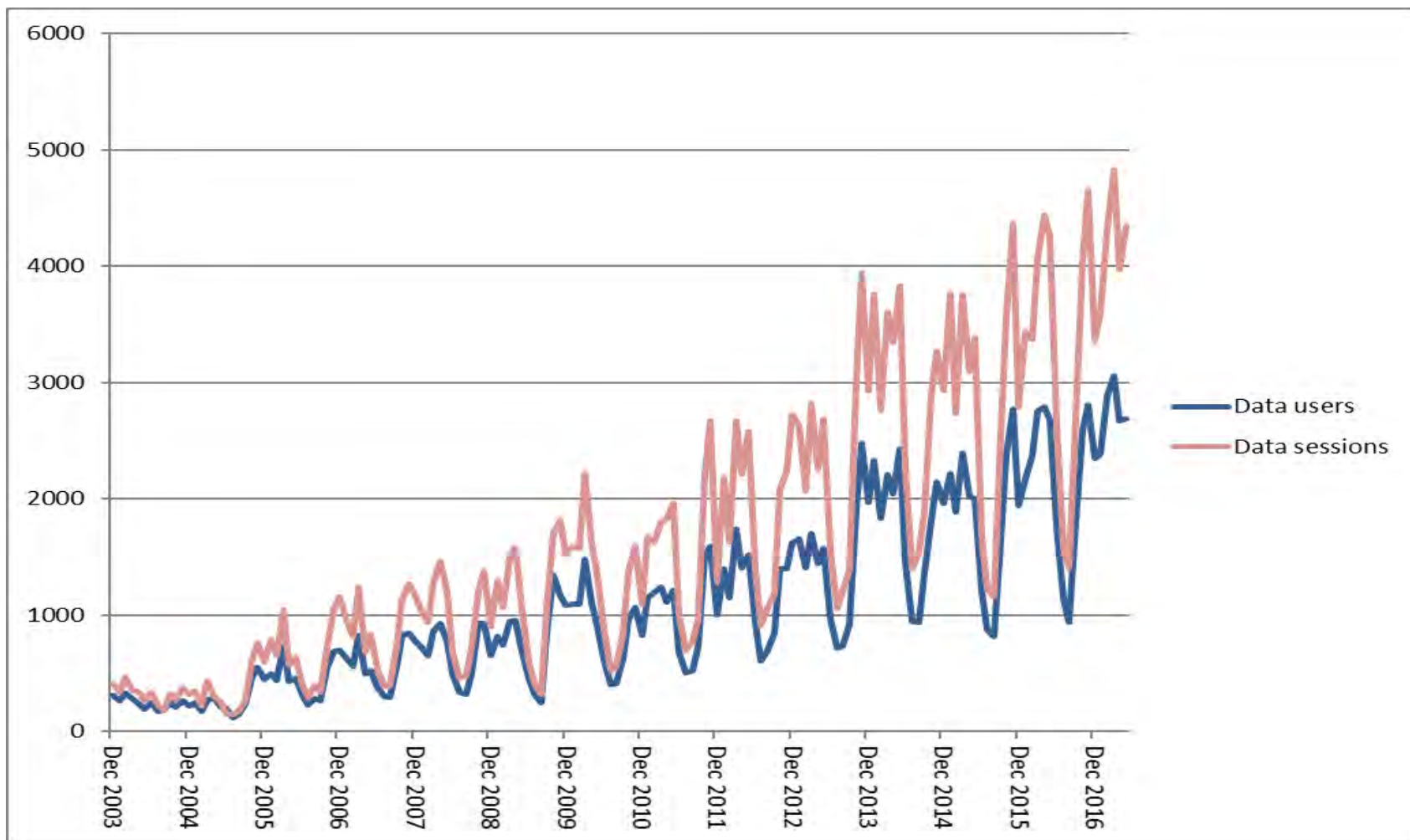
# ESS ERIC Aims - impact should reflect aims

- **Chart stability and change to interpret how Europe's social, political and moral fabric is changing**
- **Achieve and spread higher standards of rigour in cross-national research**
- **Undertake and facilitate the training of European social researchers**
- **Improve the visibility and outreach of data on social change**

- **Academic cross-national survey - attitudes and behavior**
- **Was active before becoming an ERIC**
- **1 hour face-to-face interviews every 2 years  
(since 2002/03)**
- **Over 400,000 interviews completed**
- **8 rounds completed and data archived**
- **36 countries participated in at least 1 round**
- **Fieldwork for Round 9 - September 2018**
- **Data free for non commercial use**

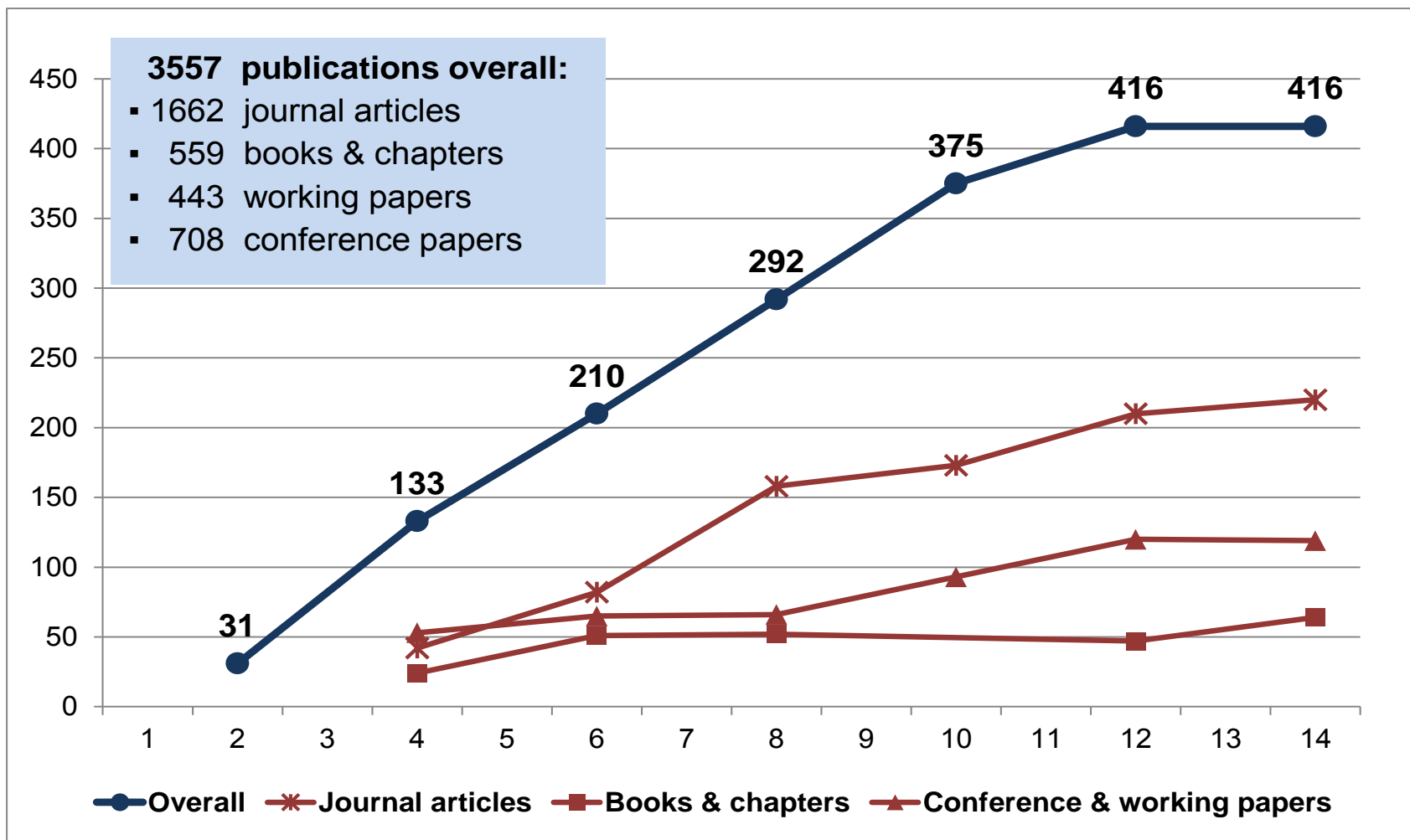
# ESS Data Users and Sessions per year

Now over 100,000 registered users

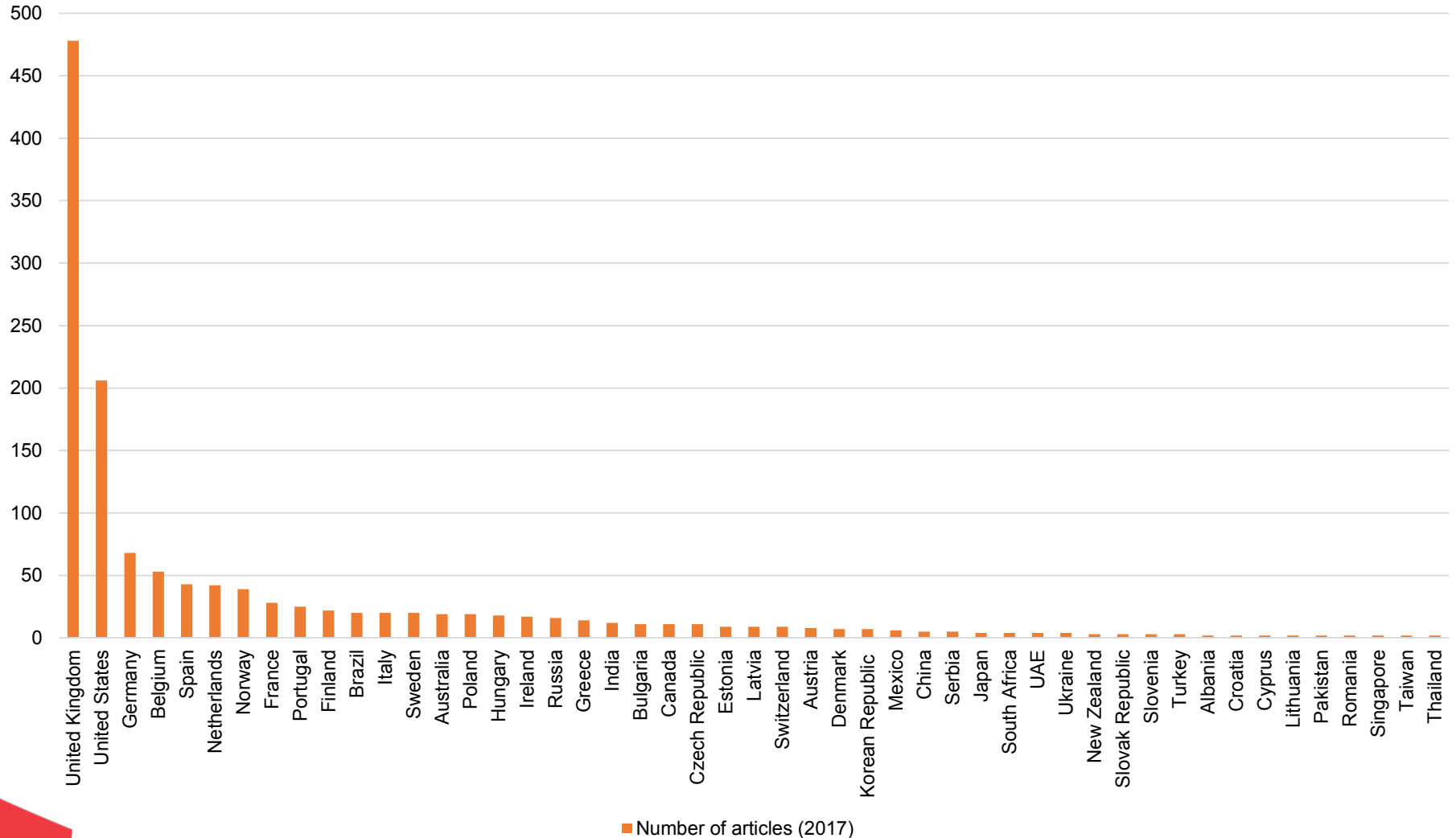


# Publications using ESS

## 3557 publications overall



# Media Coverage: 2017 by country



- **Wanted richer data to show funders the return on their investment and provide inspiration for greater and more diverse impact...**
- **Funded under a H2020 grant**
- **Built on an earlier study conducted by the UK ESRC (University of Bath)**
- **Invitation to Tender issued in May 2016**
- **Technopolis Group won contract**
- **Published in September 2017**

**The study assessed the academic, non-academic and teaching impacts that have been achieved through the ESS, by all different user groups and in all current member/observer countries.**

**It also assessed how these impacts came about ('pathways' to impact), identifies best practice, and makes recommendations to ensure the long-term sustainability of the ESS.**



- **Bibliometric analysis**
- **Survey of registered ESS users**
- **Interviews with stakeholders and data users**
- **Development of case studies**
- **Overall report**
- **Country reports**

# User numbers: key figures

- **Total registered users (March 2017): 104,729**
- **Total downloaders (March 2017): 72,920**
- **Annual active users (Excl. students) 2016/17: 6,578**
- **Student users: 64% (>60,000)**
- **Academic & PhD users: 27% (>25,000)**
- **Non-academic users: 9% (>9,000)**

- **Journal articles (up to 2017): >1,700**
- **Books, chapters, edited volumes (up to 2017): >700**
- **Journal articles listed on WoS (up to 2016): >900**
- **+ Many academic conference papers**
- **+ Numerous policy reports & briefings**
- **+ Over 30% of active users have produced teaching materials**
- **+ Many examples of ESS in the media**

# Headline Bibliometric Indicators

- **Mean normalised citation score: 1.79**  
**(1.0 would indicate average)**
- **% in top-10% most cited (by microfield): 22%**  
**(10% would indicate average)**
- **% international collaborations: 25%**

## Other key impacts

- **ESS as a benchmark: Integration and influence on other surveys**
- **In policy: Influence on agenda setting, policymaking and monitoring**
- **Important open access resource of PhDs and early career researchers**

# Teaching Hotspots

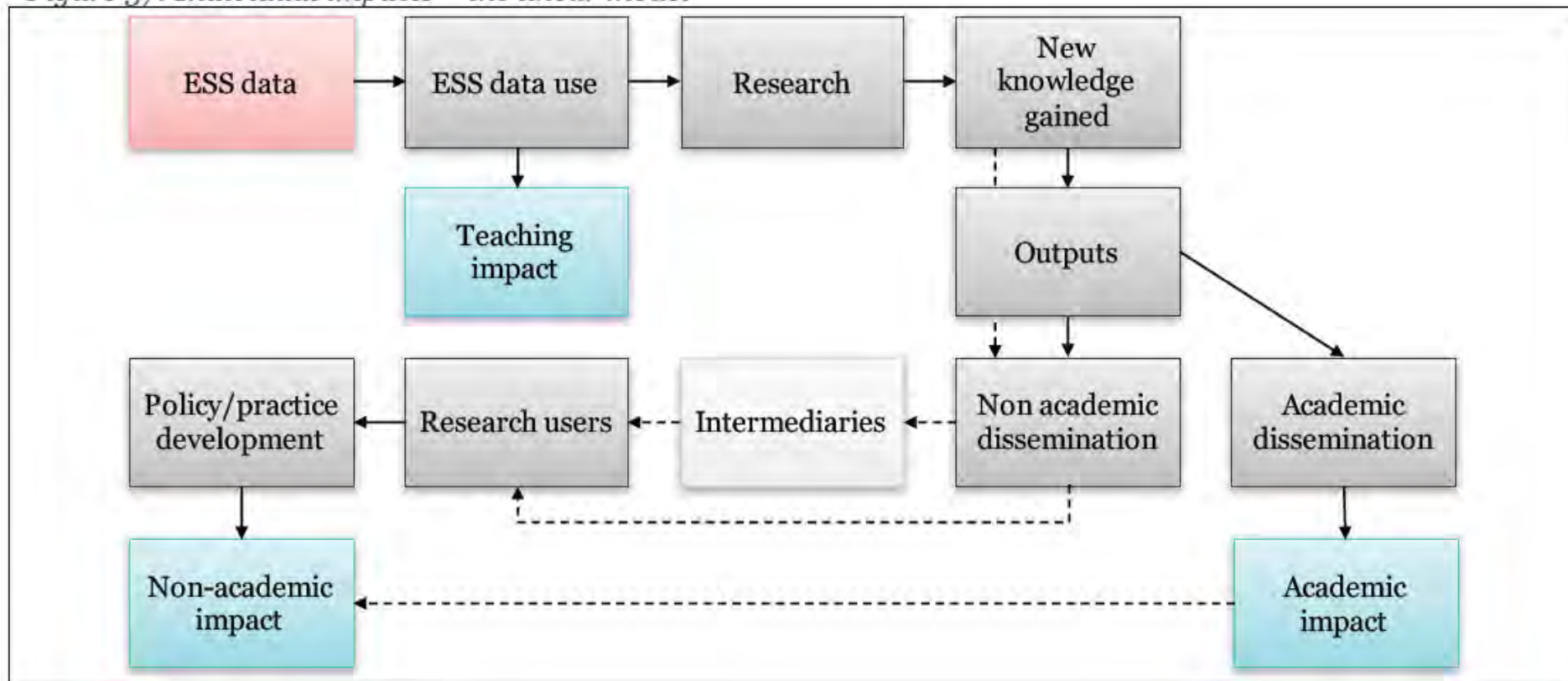
<b>Universiteit Antwerpen</b>	<b>Belgium</b>	<b>Bocconi University</b>	<b>Italy</b>
<b>University of Ljubljana</b>	<b>Slovenia</b>	<b>Warsaw School of Economics</b>	<b>Poland</b>
<b>KU Leuven</b>	<b>Belgium</b>	<b>University of Mannheim</b>	<b>Germany</b>
<b>University of Amsterdam</b>	<b>Netherlands</b>	<b>University of Copenhagen</b>	<b>Denmark</b>
<b>University of Bergen</b>	<b>Norway</b>	<b>University of Helsinki</b>	<b>Finland</b>
<b>Sciences Po</b>	<b>France</b>	<b>University of Tartu</b>	<b>Estonia</b>
<b>University of Liège</b>	<b>Belgium</b>	<b>LSE</b>	<b>United Kingdom</b>
<b>NTNU</b>	<b>Norway</b>	<b>University of Geneva</b>	<b>Switzerland</b>
<b>University of Vienna</b>	<b>Austria</b>	<b>Aarhus University</b>	<b>Denmark</b>
<b>NRU HSE</b>	<b>Russia</b>	<b>Radboud University Nijmegen</b>	<b>Netherlands</b>
<b>University College Dublin (UCD)</b>	<b>Ireland</b>	<b>ISCTE</b>	<b>Portugal</b>
<b>Universitat Pompeu Fabra (UPF)</b>	<b>Spain</b>	<b>University of Exeter</b>	<b>United Kingdom</b>

## Examples of non academic impact

- **Intelligence for policymaking at the Ministry of Social Affairs (AT)**
- **Evidence for the declaration on future of the ‘Nordic Model’ (NO)**
- **Increased intelligence and benchmarking for the Police Agency (IE)**
- **Support to include LGBTQI people as a recognised discriminated group (HU)**
- **Increased global cooperation monitoring health inequalities (NO)**
- **Benchmark for Eurofound’s measurement of quality of life (EU)**
- **Agenda-setting and monitoring of civic/political participation (LT)**
- **Improved training of judges and support for reforms of the judiciary (PT)**
- **Influence on media and public debate around immigration (NL)**

# Pathways to impact – linear model

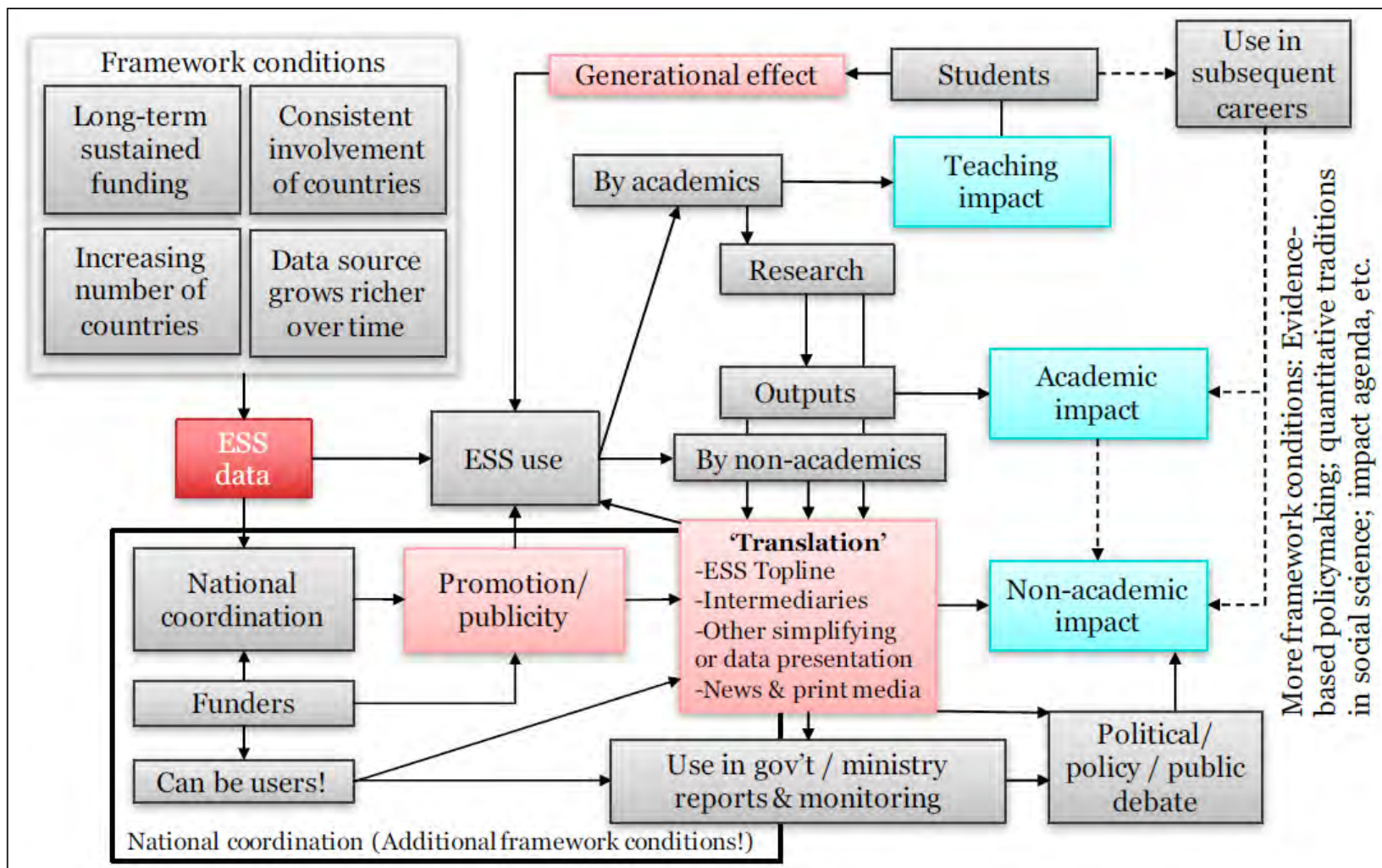
Figure 37: Individual impacts – the linear model



Source: Technopolis



# Pathways to impact – complex model



- **Impact study has complemented core monitoring by RI**
- **Well received by funders and is aiding sustainability**
- **Methodology sound but must stress it is not an evaluation of the ESS (eg those who might have used ESS but chose not to largely excluded)**
- **Suggest repeating around every 8 years but not more often (should not detract resources from developing the science)**

## CONTACT

 [r.fitzgerald@city.ac.uk](mailto:r.fitzgerald@city.ac.uk)

 [www.europeansocialsurvey.org](http://www.europeansocialsurvey.org)

 [@ESS\\_Survey](https://twitter.com/ESS_Survey)

 [EuropeanSocialSurvey](https://www.facebook.com/EuropeanSocialSurvey)

 [european-social-survey](https://www.linkedin.com/company/european-social-survey)